
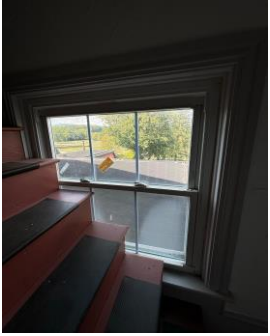


## Windows (Measurements W x H)

Location:	How many Windows in location:	Approximate Measurements:	Photo:
Widow's Peak Top (half moon) :	1	Top- 13 3/8x 27 3/4	
Widow's Peak Bottom :	1	27 3/8 x 53 1/2	
Stairway to Roof	1	40 1/2 x 41 1/4	

3rd Floor Main Bathroom

1 of 2

40 1/2 x 41



3rd Floor Main Bathroom

2 of 2

40 1/2 x 76 1/4



3rd Floor Office One

1 of 2

40 1/2 x 76 1/4



3rd Floor Office One

2 of 2

46 1/2 x 76 1/4



3rd Floor Office Two

1 of 2

46 1/2 x 76 1/4



3rd Floor Office Two

2 of 2

40 1/2 x 76 1/4



3rd Floor Office Three

1 of 2

16 x 67 1/4



3rd Floor Office Three

2 of 2

31 x 67 1/4



3rd Floor Office Four

1 of 2

16 x 67 1/4



3rd Floor Office Four

2 of 2

31 x 67 1/4



3rd Floor Office Five

1 of 3

26 1/2 x 74 1/2

3rd Floor Office Five

2 of 3

31 1/2 x 74 1/2

3rd Floor Office Five

3 of 3

26 1/2 x 74 1/2

4th Floor Office Five Storage/Bathroo

1 of 4

17 3/4 x 55

4th Floor Office Five Storage/Bathroo

2 of 4

17 3/4 x 55



d Floor Office Five Storage/Bathroo

3 of 4

17 3/4 x 55

d Floor Office Five Storage/Bathroo

4 of 4

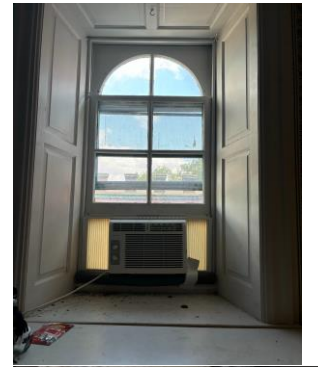
17 3/4 x 55



2nd 1/2 Floor Office One

1 of 2

28 1/2 x 58 1/4



2nd 1/2 Floor Office One

2 of 2

28 1/2 x 58 1/4



2nd 1/2 Floor Office Two

1 of 2

28 1/2 x 57 1/4



2nd 1/2 Floor Office Two

2 of 2

28 1/2 x 57 1/4



2nd 1/2 Floor Hallway

1 of 1

37 x 36

